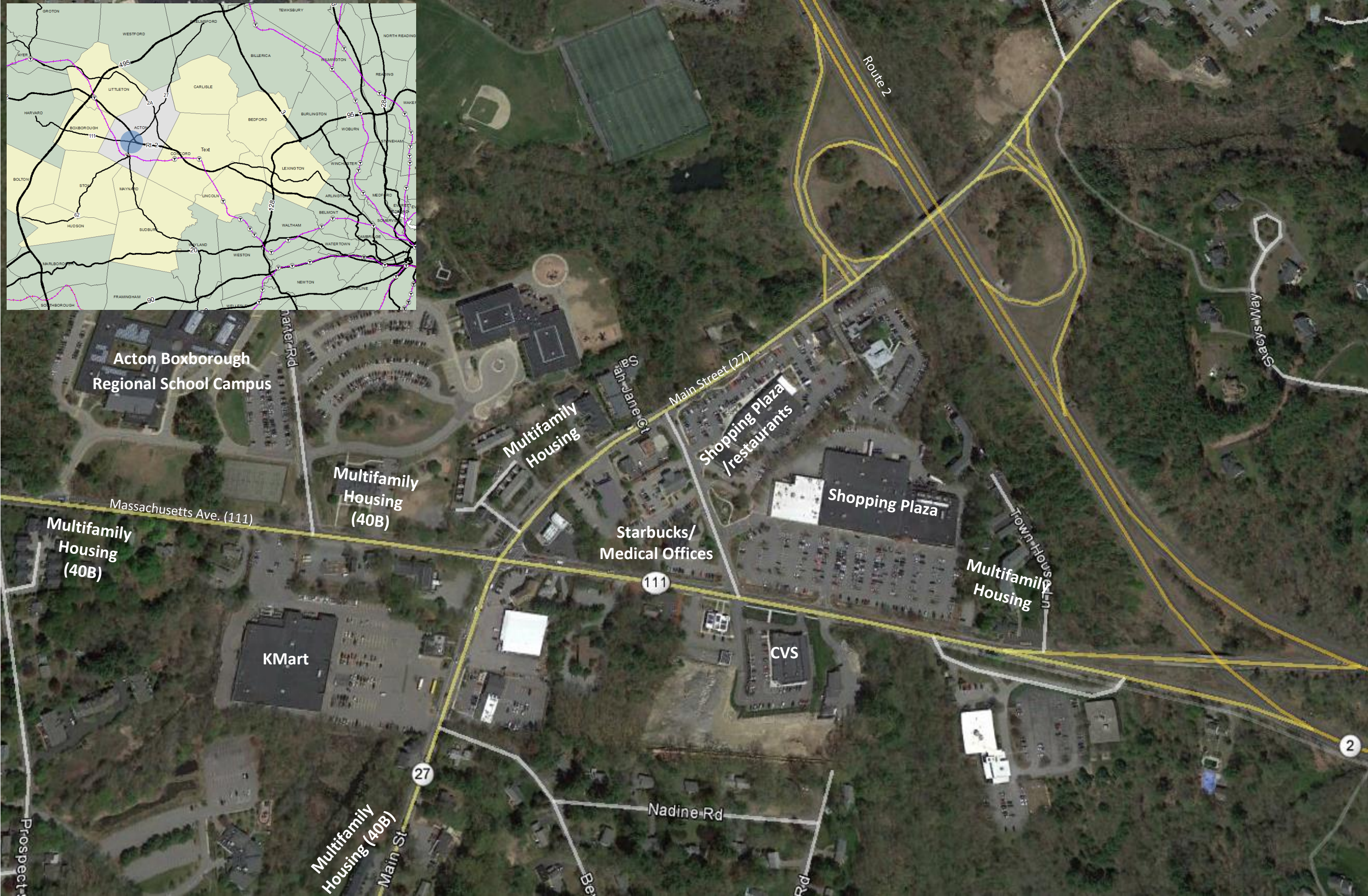
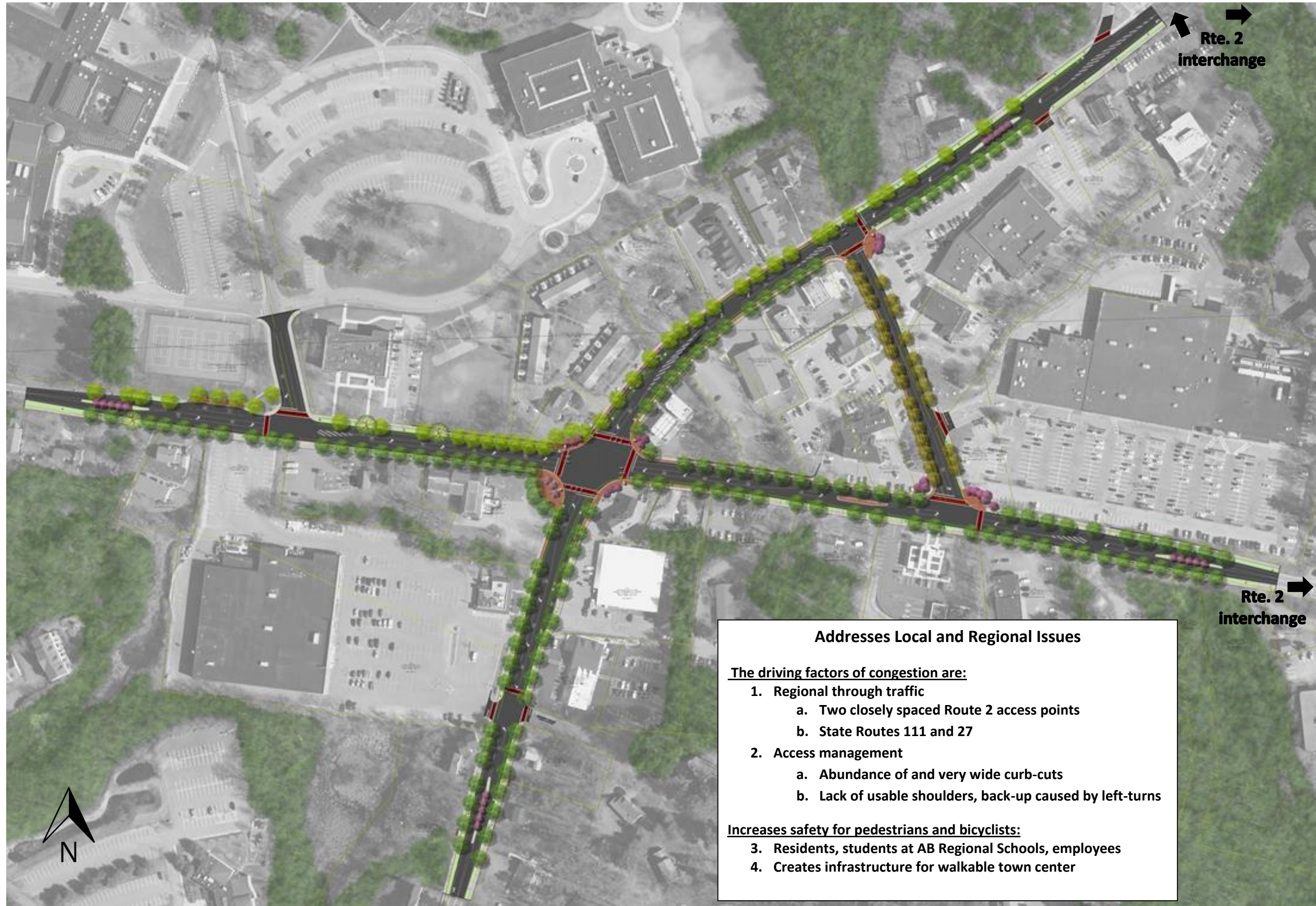


Kelley's Corner Intersection Improvement Project #608229



Kelley's Corner Intersection Improvement Project #608229



Addresses Local and Regional Issues

The driving factors of congestion are:

1. Regional through traffic
 - a. Two closely spaced Route 2 access points
 - b. State Routes 111 and 27
2. Access management
 - a. Abundance of and very wide curb-cuts
 - b. Lack of usable shoulders, back-up caused by left-turns

Increases safety for pedestrians and bicyclists:

3. Residents, students at AB Regional Schools, employees
4. Creates infrastructure for walkable town center