

Projects, Grouped by MPO Investment Category

Bicycle/Pedestrian

608006 Framingham Pedestrian Hybrid Beacon Installation at Route 9 and Maynard Road

Complete Streets

608887 Bellingham [South Main St. \(Route 126\) – Douglas Drive to Mechanic St. Reconstruction \(Route 140\)](#)

608348 Beverly Rehabilitation of Bridge St.

608007 Cohasset Corridor Improvements and Related Work on Justice Cushing Highway (Route 3A), from Beechwood Street to the Scituate Town Line

602310 Danvers Reconstruction on Collins St.

607899 Dedham Pedestrian improvements along Bussey St.

[605168 Hingham Summer St./Rockland St. Roadway and Streetscape Improvements](#)

605743 Ipswich Resurfacing and related work on Central and South Main Sts.

608275 Malden Lighting and Sidewalk Improvements on Exchange Street

[608045 Milford Rehabilitation on Route 16 \(East Main St.\) from Route 109 to Beaver St.](#)

601704 Newton Reconstruction and signal improvements on Walnut St.

[608933 Peabody Rehabilitation of Central St.](#)

[608707 Quincy Reconstruction of Sea St.](#)

[607244 Winthrop Revere St. Roadway Improvements](#)

Intersection Improvements

[608443 Littleton/Ayer Intersection Improvements on Route 2A at Willow Road and Bruce St.](#)

604231 Marlborough Intersection and signal improvements on Route 20 (East Main St./ Boston Post Rd.) at Concord Rd.

607305 Reading Intersection Signalization at Route 28 and Hopkins Street

607249 Sudbury Intersection improvements at Route 20 and Landham Rd.

603739 Wrentham Construction of I-495/Route 1A Ramps

Project descriptions provided on the following pages

[Blue font indicates projects scored for the first time in FFY 2018](#)

Framingham - Pedestrian Hybrid Beacon Installation at Route 9 and Maynard Road (608006)

Location: Route 9 in the vicinity of Maynard Road and the Framingham Fire Station

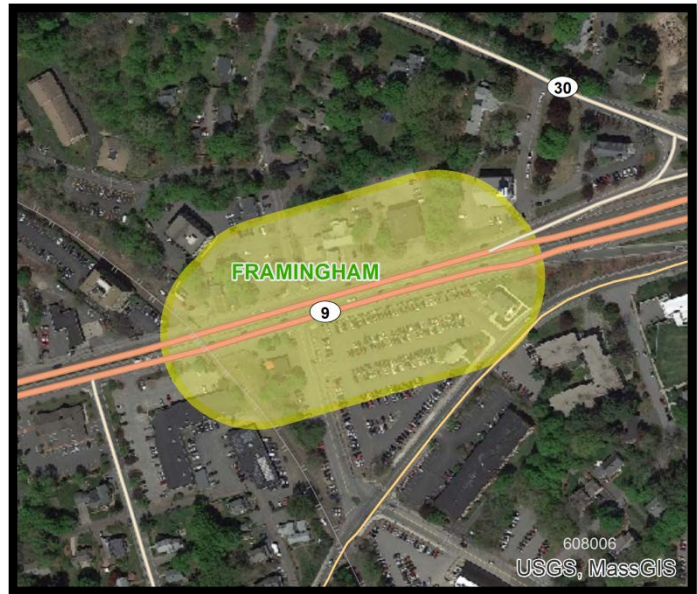
MPO Investment Category:
Bicycle/Pedestrian Improvements

Main Objectives:

- Improve pedestrian safety in the project area

Project Details:

- Construction of a pedestrian hybrid beacon and crosswalk on the east side of the Route 9 and Maynard Road intersection. Details include:
 - Crosswalk will be at-grade
 - Crossing will be controlled by a High-Intensity Activated crossWalk beacon (HAWK) mounted on an 8-foot post with a 30-foot mast arm with signal control over the eastbound and westbound travel lanes
- Upgrade the Route 9 median.
 - Convert this to a concrete barrier with fencing and narrowing the median opening which allows emergency vehicle access across Route 9
- Reconstruction of the existing emergency signal for the Framingham Fire Station on Route 9 and the CSX railroad crossing. The new traffic control cabinet and foundation will be constructed to allow continued emergency vehicle pre-emption



Initial MPO Evaluation Score: 27

Bellingham - Rehabilitation and Related Work on Route 126 (608887)

Location: South Main Street
(Route 126) from Douglas Drive to
Route 140 (1.22 miles)

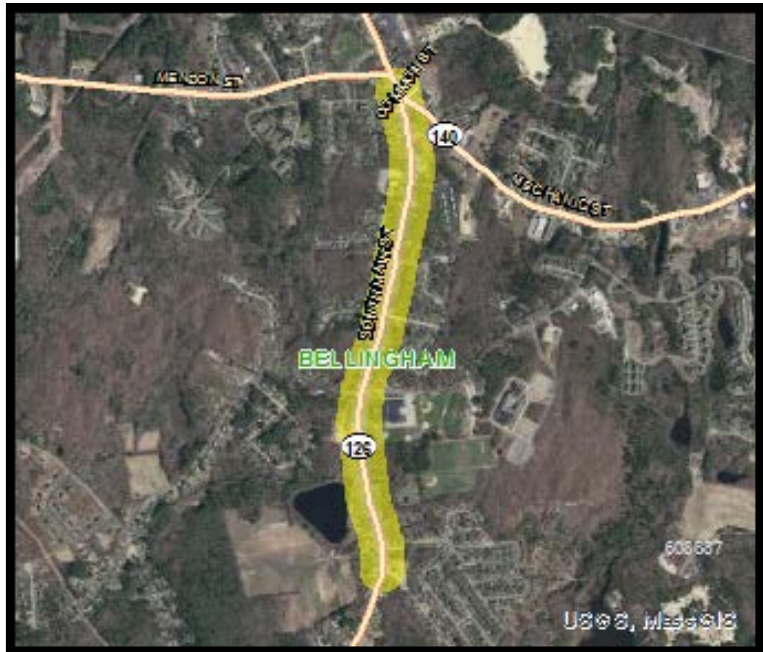
MPO Investment Category:
Complete Streets

Main Objectives:

- Improve safety for all roadway users, including students at the Bellingham Middle and High School
- Close gaps in the sidewalk network
- Provide new bicycle accommodations

Project Details:

- Proposed improvements will include:
 - Installation/reconstruction of sidewalks with ADA/AAB compliant wheelchair ramps on both sides of Route 126
 - Box widening to provide minimum five-foot wide shoulders throughout the corridor for bicycle accommodation. Shoulders will be striped as bicycle lanes.
 - New bicycle lane at the Route 126/Blackstone Street intersection
 - New crosswalks at each stop-controlled minor street intersection
 - Resurfacing on the majority of South Main Street



Initial MPO Evaluation Score: 37

Beverly - Rehabilitation of Bridge Street (608078)

Location: Bridge Street from Danvers city line, crossing the Bass River to the intersection with River Street (1.3 miles)

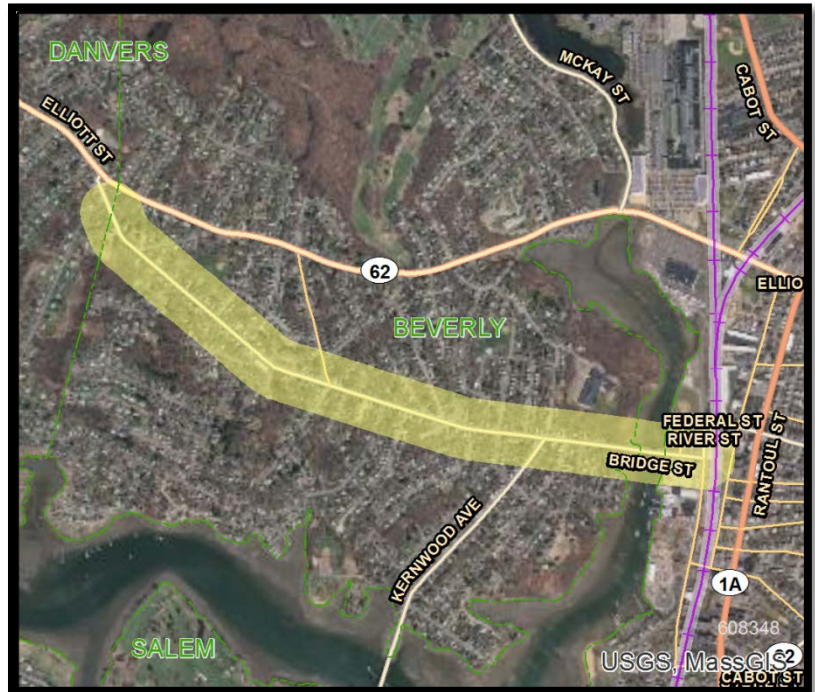
MPO Investment Category:
Complete Streets

Main Objectives:

- Make the area safer to travel as a pedestrian or bicyclist
- Reduce congestion
- Increase safety for residents patrons of local businesses, and users of the roadway

Project Details:

- Proposed improvements include:
 - Widening and/or reconstructing all sidewalks to seven-foot width, textured crosswalks, and five-foot shoulders for bicycles
 - New traffic signal at Kernwood Avenue and River Street
 - Signals at Livingstone Avenue will be upgraded
 - Three intersections of Bridge Street (Cressy Street, County Way/Bates Park Avenue, and Eastern Avenue) will be realigned to become T-intersections, providing safer crossings for bicycles and pedestrians



Initial MPO Evaluation Score: 59

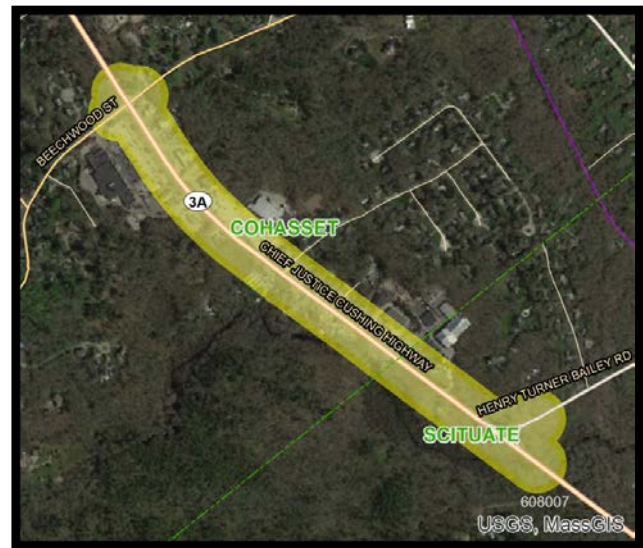
Cohasset - Corridor Improvements on Justice Cushing Highway (Route 3A), from Beechwood Street to the Scituate Town Line (608007)

Location: Route 3A between Beechwood Street and Henry Turner Bailey Road (0.75 miles)

MPO Investment Category: Complete Streets

Main Objectives:

- Improve safety of this section of Route 3A, in the vicinity of a commercial area
- Improve the safety at the intersection of Route 3A and Beechwood Street
- Add bicycle and pedestrian accommodations throughout the project area



Project Details:

- Signalization and roadway geometry improvements at the intersections at the northwest (Route 3A and Beechwood Street) and southeast (Route 3A and Henry Turner Bailey Road) limits of the project area. Including:
 - Maintain existing traffic signal at Route 3A and Beechwood Street
 - New traffic signal at the intersection of Route 3A and Henry Turner Bailey Road.
 - Some geometric changes include:
 - Exclusive left turn lanes on Route 3A at Beechwood Street
 - Shared lanes on Beechwood Street
 - Raised median south of Beechwood Street to restrict left turn lanes into and out of the gas station at this location
 - Exclusive left turn lane at the intersection of Henry Turner Bailey Road and Route 3A
- Provision of a two-way left turn lane through the commercialized area along Route 3A
- Reconstruction of all driveways within the project limits to include accessible pedestrian signals and ramps as well as the narrowing, consolidation, and clear delineation of access points along Route 3A
- Provision of a 6-foot sidewalk on each side of Route 3A in the project area with accessible pedestrian signals and ramps at the intersections and driveways
 - Provision of a bicycle lane along each direction of Route 3A with bicycle detection at the signalized intersections

Initial MPO Evaluation Score: 37

Danvers - Reconstruction of Collins Street (602310)

Location: Collins Street from Sylvan Street to Centre and Holten Streets (0.92 miles)

MPO Investment Category:
Complete Streets

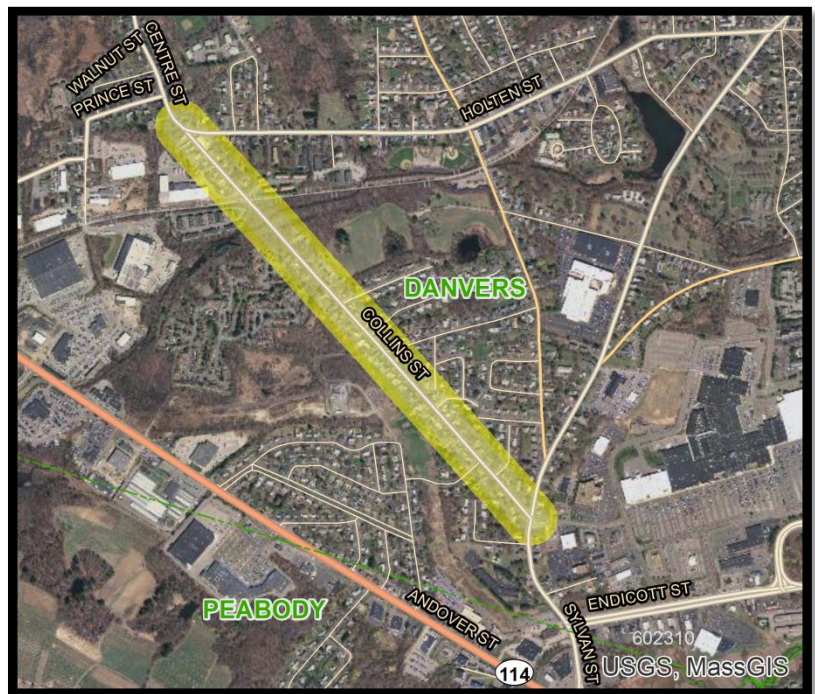
Main Objectives:

- Make the area safer to travel as a pedestrian or bicyclist
- Reduce congestion
- Increase safety for residents patrons of local businesses, and users of the roadway

Project Details:

- Proposed improvements include:
 - Reconfiguring the Collins Street approach to Centre Street to create a T-intersection and adding an exclusive right-turn lane on Centre Street
 - New traffic signal at Collins Street at Centre Street/Holten Street
 - Sidewalk and bicycle accommodations will be provided along the corridor

Initial MPO Evaluation Score: 46



Dedham - Pedestrian Improvements along Bussey Street (607899)

Location: Bussey Street from the Boston city line to south of Chauncey Street (0.5 miles)

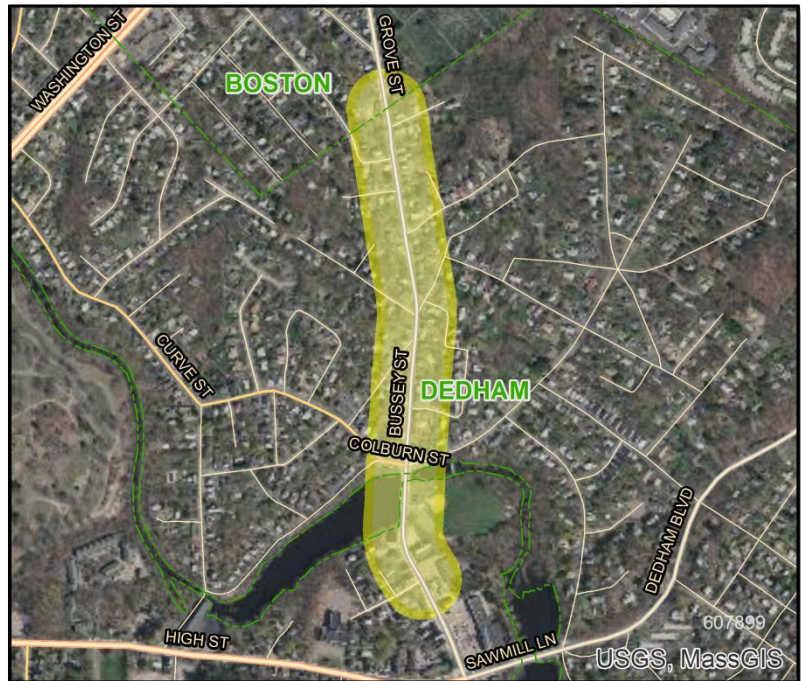
MPO Investment Category:
Complete Streets

Main Objectives:

- Make the area safer to travel as a pedestrian or bicyclist
- Rehabilitating pavement

Project Details:

- Proposed improvements will include:
 - Uniform roadway width striped for an 11-foot travel lane and a two-foot shoulder in each direction north of Colburn Street and an 11-foot travel lane and a five-foot shoulder in each direction south of Colburn Street
 - Minimum 5'-6" paved sidewalk on both sides of roadway
 - Bicycle accommodations by means of shared-lane markings or "sharrows" in the travel lane
 - New ADA-compliant wheelchair ramps at intersection of Bussey Street with Colburn Street and Colonial Drive/Clisby Avenue as well as crosswalks throughout corridor



Initial MPO Evaluation Score: 23

Hingham - Summer Street/Rockland Street Roadway and Streetscape Improvements (605168)

Location: Central Street from Wilson Square (including the intersections of Gardner Street and Pulaski/Andover/Endicott) to Railroad Avenue (0.7 mile).

MPO Investment Category:
Complete Streets

Main Objectives:

- Improve roadway and traffic control operations
- Improve pedestrian safety and ADA accessibility
- Provide new on-street bicycle accommodations

Project Details:

- Proposed roadway improvements include:
 - Full depth reconstruction of roadway
 - Alteration of cross-sections to provide a consistent width throughout corridor
 - Streetscape improvements, where possible
- Proposed bicycle/pedestrian improvements include:
 - ADA compliant ramps
 - Textured crosswalks
 - On-street bicycle accommodations
 - Modernization of traffic signal equipment
 - Constructing curb with consistent reveal
- Proposed intersection and signal improvements include:
 - Addition of signals at Central Street at Tremont Street with the purpose of connecting to the existing signals at Warren Street.
 - Provision of a Rectangular Rapid Flashing Beacon at the existing outdated pedestrian crosswalk on the northern section of Central Street.
 - Coordination of the Wilson Square signals with the signals at Pulaski Street at Gardner to improve operations and mitigate some of the existing delays and queues.



Initial MPO Evaluation Score: 51

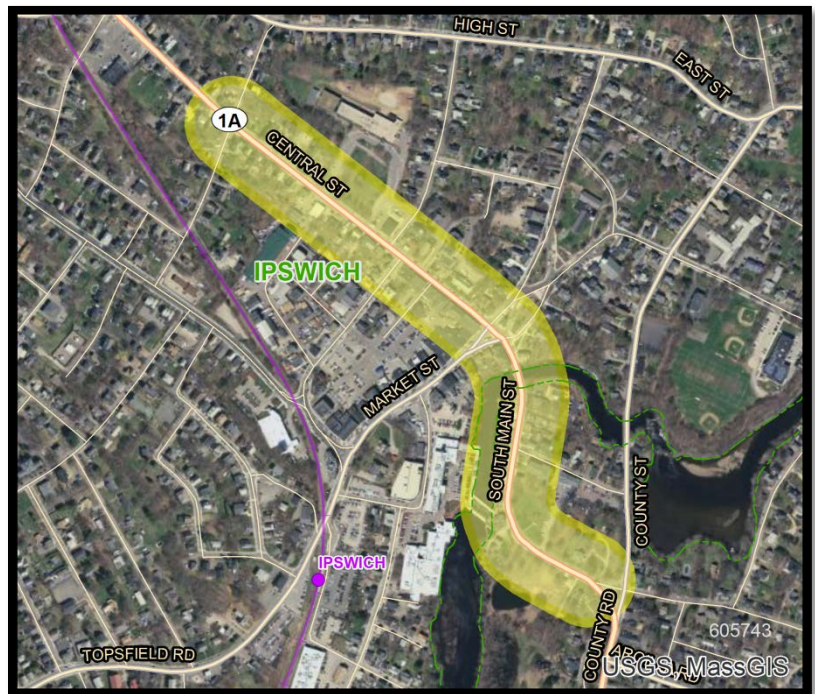
Ipswich - Resurfacing and Related Work on Central and South Main Streets (605743)

Location: Central and South Main Streets from the intersection of Central Street and Mineral Street to the north to the intersection of South Main Street and County Road to the south through the downtown area (0.55 miles)

MPO Investment Category:
Complete Streets

Main Objectives:

- Make the area safer to travel as a pedestrian or bicyclist
- Increase safety for residents, patrons of local businesses, and users of the roadway



Project Details:

- Proposed improvements will include:
 - Reconstructed roadway to standardize roadway cross-section to allow for improved traffic flow
 - Modify traffic islands at South Main Street/Poplar Street/County Street for traffic calming and to improve traffic flow
 - Improve facilities for bicyclists and pedestrians, including creating safer access to the Ipswich Commuter Rail Station
 - Clarify roadway layout for motorists and minimize conflicts between motorists, pedestrians, and cyclists
 - Provide ADA compliant sidewalks and crosswalks
 - Enhance cycling opportunities and cyclist safety through designated bicycle travel where possible

Initial MPO Evaluation Score: 39

Malden - Pavement, Sidewalk Rehabilitation, and Other Improvements on Exchange Street (Lighting and Sidewalk Improvements on Exchange Street) (608275)

Location: Exchange Street from Abbott Street to Main Street, including the connecting side streets of Abbott Street, Washington Street, and Middlesex Street (0.31 miles)

MPO Investment Category: Complete Streets

Main Objectives:

- Improve vehicular and pedestrian connections within the downtown
- Enhance the streetscape including pedestrian safety and aesthetic improvements
- Provide dedicated on-street bicycle lane
- Improve Exchange Street to accommodate all users



Project Details:

- Along Exchange Street (0.31 miles/0.62 lane miles) in the project area, as well as along the connecting side streets, the project would make the following improvements:
 - Pavement reconstruction or rehabilitation
 - ADA compliant sidewalks and pedestrian ramps
 - Sidewalk extensions (curb bump-outs) at intersections
 - Dedicated pavement markings along Exchange Street for a bike lane
 - New street trees
 - ADA compliant tree grates
 - LED lighting
 - Benches
 - Bicycle racks
 - Trash receptacles
 - Street signs
 - Repair or replacement of drainage infrastructure, including the adjustment of vertical profile grades along the gutter lines to improve drainage

Initial MPO Evaluation Score: 57

Milford - Rehabilitation on Route 16 (608045)

Location: Route 16, from Route 109 to Beaver Street (1.32 miles)

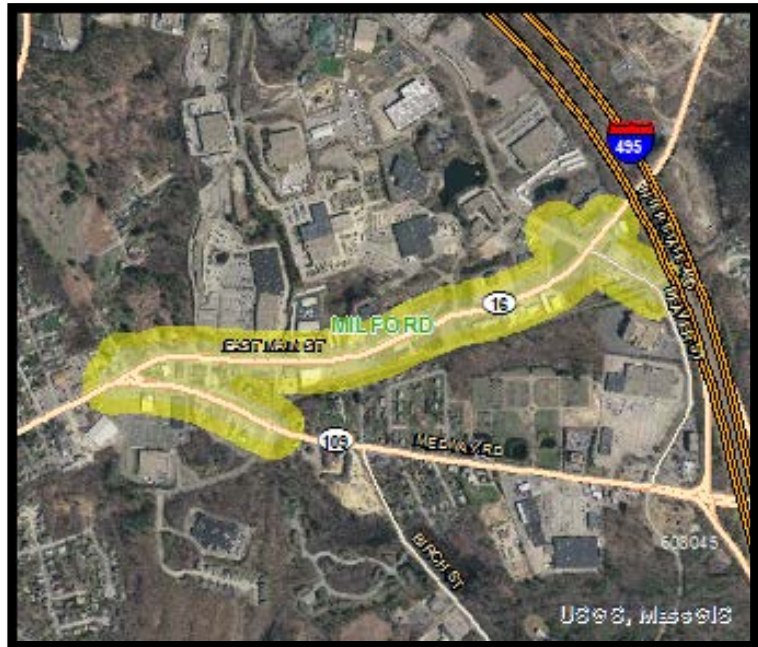
MPO Investment Category:
Complete Streets

Main Objectives:

- Improve safety for all roadway users
- Improve traffic operations at study area intersections

Project Details:

- Proposed improvements will include:
 - Geometric improvements to provide pedestrian and bicycle accommodations and enhance vehicle safety
 - Modification of traffic flow at high-crash locations, including a road diet on Route 16 at the west and east ends of the corridor, providing a single travel lane in each direction throughout the corridor
 - Installation of six-foot designated bike lanes for the main corridor of Route 16 for both directions. Shared lanes are proposed for both directions of Route 109, and five-foot shoulders are proposed on Beaver Street and Fortune Boulevard.
 - Rebuilding existing sidewalks and adding sidewalks where none exist for the entirety of the project area. Sidewalks will have ADA-compliant ramps with tactile warning panels at all intersection crossings.



Initial MPO Evaluation Score: 49

Newton - Reconstruction and Signal Improvements on Walnut Street (601704)

Location: Walnut Street from Centre Street to just south of its intersection with Homer Street (1.14 miles) and Centre Street from just east of the Route 9 Interchange to Walnut Street (0.1 miles)

MPO Investment Category:
Complete Streets

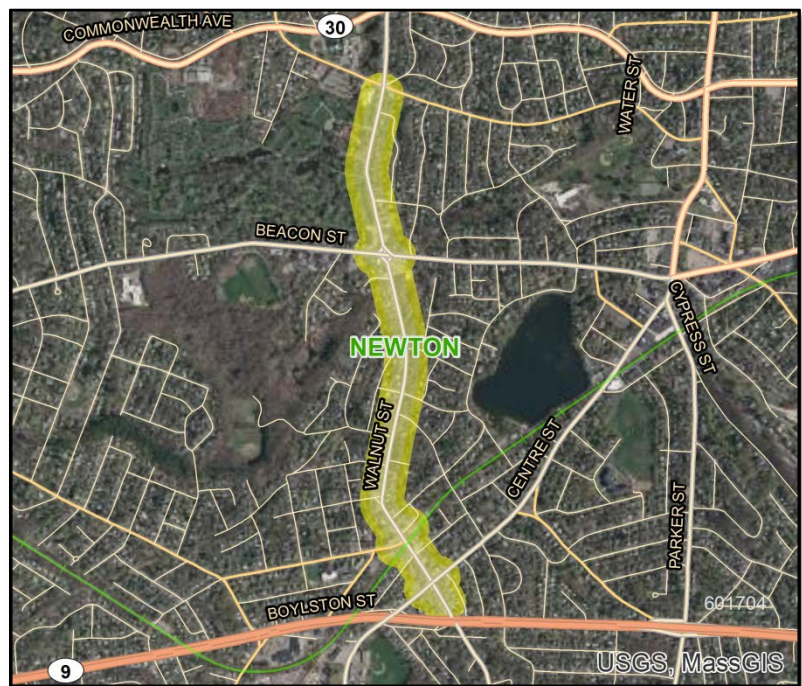
Main Objectives:

- Make the area safer to travel as a pedestrian or bicyclist
- Improve traffic flow
- Increase safety for residents and users of the roadway

Project Details:

- Proposed improvements will include:
 - Roadway reconstruction along the corridor
 - Walnut and Beacon Streets – elimination of channelized right-turn lanes will make navigation of intersection with fewer conflicts, more direct pedestrian crossings, signal upgrades
 - Walnut and Lincoln Streets and Walnut and Centre Streets – new accessible ramps and shorter intersection crossings, signal upgrades and coordination

Initial MPO Evaluation Score: 43



Peabody - Rehabilitation of Central Street (608933)

Location: Central Street from Wilson Square (including the intersections of Gardner Street and Pulaski/Andover/Endicott) to Railroad Avenue (0.7 miles).

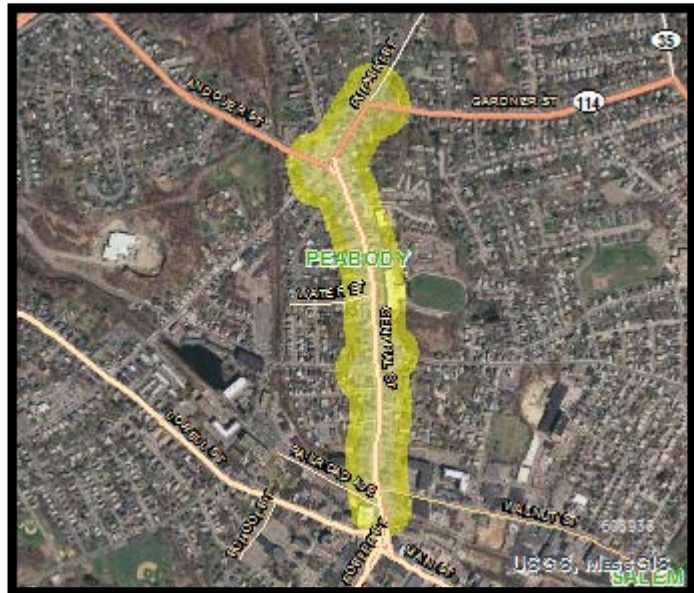
MPO Investment Category:
Complete Streets

Main Objectives:

- Improve roadway and traffic control operations
- Improve pedestrian safety and ADA accessibility
- Provide new on-street bicycle accommodations

Project Details:

- Proposed roadway improvements include:
 - Full depth reconstruction of roadway
 - Alteration of cross-sections to provide a consistent width throughout corridor
 - Streetscape improvements, where possible
- Proposed bicycle/pedestrian improvements include:
 - ADA compliant ramps
 - Textured crosswalks
 - On-street bicycle accommodations
 - Modernization of traffic signal equipment
 - Construction of curb with consistent reveal
 - Relocation of mid-block crosswalks
- Proposed intersection and signal improvements include:
 - Addition of signals at Central Street at Tremont Street with the purpose of connecting to the existing signals at Warren Street
 - Provision of a Rectangular Rapid Flashing Beacon at the existing outdated pedestrian crosswalk on the northern section of Central Street.
 - Coordination of the Wilson Square signals with the signals at Pulaski Street at Gardner to improve operations and mitigate some of the existing delays and queues.



Initial MPO Evaluation Score: 58

Quincy - Reconstruction of Sea Street (608707)

Location: Sea Street from eastern limit of Sea Street/Quincy Shore Drive Intersection Improvements Project to a point east of the intersection of Sea Street and Palmer Street (0.92 miles)

MPO Investment Category:
Complete Streets

Main Objectives:

- Improve traffic operations
- Improve vehicular, pedestrian, and cyclist safety
- Provide new bicycle accommodations



Project Details:

- Proposed improvements will include:
 - Realignment of Narragansett Road to create direction intersection with Sea Street
 - Installation of fully actuated traffic signal at the Sea Street/Narragansett Road/Murphy Memorial Drive intersection
 - Replacement of existing traffic signals where needed
 - Two 11-foot lanes and a 5-foot shoulder to accommodate bicycles along Sea Street in both directions
 - Reconstructed existing sidewalks and added sidewalks where needed, including ADA-compliant wheelchair ramps and detectable warning panels
 - Crosswalks across all intersecting side streets
 - Rehabilitated pavement and full depth box widening in various locations
 - Raised median or scored concrete median for the majority of the project corridor

Initial MPO Evaluation Score: 31

Winthrop - Revere St. Roadway Improvements (607244)

Location: Revere Street, from Main Street to Crest Avenue (0.6 miles)

MPO Investment Category:
Complete Streets

Main Objectives:

- Reconstructing pavement
- Reconstructing existing sidewalks
- Improving safety for all roadway users

Project Details:

- Proposed improvements will include:
 - Pavement reconstruction throughout the project area
 - Lane and shoulder widths designed to meet MassDOT minimum requirements, which will improve safety for vehicles and bicyclists while maintaining existing on-street parking
 - Updated signage and pavement markings, including pedestrian signage and delineation of bicycle travel ways where feasible
 - Improved traffic signal performance and alternations to geometry at the intersection of Magee's Corner and Revere Street at Crest Avenue and Highland Avenue
 - Reconstructed sidewalks with ADA-compliant wheelchair ramps on both sides
 - Streetscape enhancements



Initial MPO Evaluation Score: 46

Littleton-Ayer - Intersection Improvements on Route 2A at Willow Road and Bruce Street (608443)

Location: Intersection of Route 2A and Willow Road/Bruce Street

MPO Investment Category:
Intersection Improvements

Main Objectives:

- Improve traffic operations
- Improve vehicular, pedestrian, and cyclist safety
- Provide new pedestrian and cyclist accommodations

Project Details:

- Proposed improvements will include:
 - Creation of two intersections. Willow Road will be aligned with the eastern gas station driveway to form a four-legged signalized intersection; Bruce Street will be aligned to intersection Route 2A/110 at a second, unsignalized T-intersection.
 - Roadway widening on Route 2A/110 to accommodate left-turn lanes (in both directions) at Willow Road and Bruce Street. Widening will also provide an exclusive right-turn lane for vehicles turning onto Willow Road.
 - Roadway widening on Willow Road to provide two approach lanes, separating left-turning traffic from right-turning traffic
 - Addition of 5' wide shoulder, striped to accommodate bicyclists, on both sides of Route 2A/110
 - Addition of 5' wide, ADA-compliant sidewalks on both sides of Route 2A/110
 - Addition of crosswalks across all legs of the intersection



Initial MPO Evaluation Score: 36

Marlborough - Intersection and Signal Improvements on Route 20 (East Main Street/Boston Post Road at Concord Road (604231))

Location: Route 20 (East Main Street/Boston Post Road at Concord Road

MPO Investment Category:
Intersection Improvement

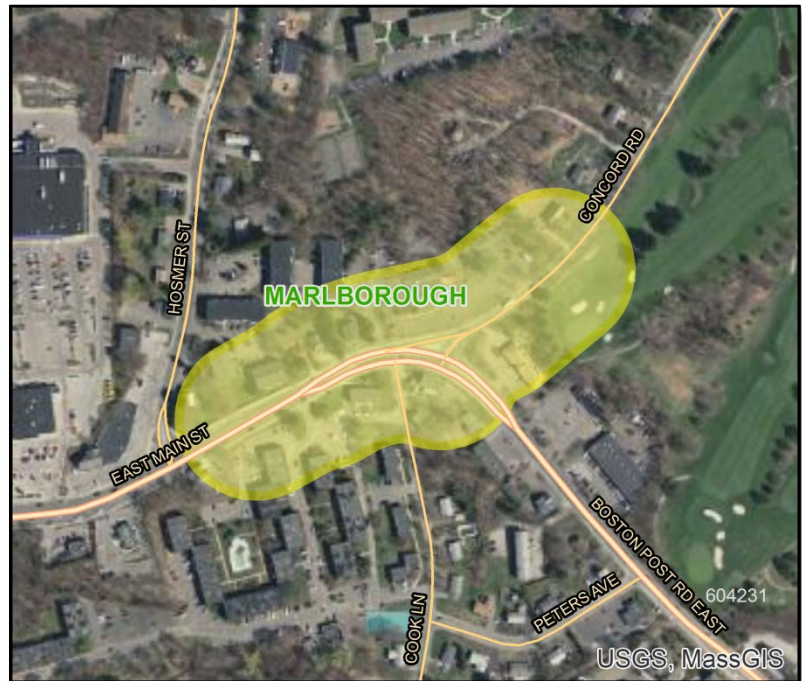
Main Objectives:

- Make the area safer to travel as a pedestrian or bicyclist
- Reduce congestion
- Increase safety for residents and users of the roadway

Project Details:

- Proposed improvements will include:
 - Widen East Main Street to accommodate two travel lanes in each direction and one dedicated left turn lane
 - Reduce radius between Concord Road and East Main Street westbound to slow turning traffic
 - Construct scored median on eastbound approach to discourage left turn on to Cook Lane
 - Install a fully actuated signal and provide coordination with two intersections in proximity to study area
 - Install pedestrian crosswalk on Route 20 eastbound approach
 - Provide bicycle detection on all approaches

Initial MPO Evaluation Score: 34



Reading (MassDOT) - Intersection Signalization at Route 28 and Hopkins Street (607305)

Location: Intersection of Route 28 and Hopkins Street, north of the Route 128/Route 28 interchange.

MPO Investment Category:
Intersection Improvements

Main Objectives:

- Improve vehicular and pedestrian safety
- Improve intersection traffic operations
- Rehabilitate existing sidewalks and roadways
- Provide greater pedestrian mobility with improved sidewalks and AAB/ADA compliant wheelchair ramps



Project Details:

- Installation of a fully-actuated traffic signal system which would include:
 - Advance phase for northbound approach and protected permitted operation for left-turn vehicles
 - Protected, push-button actuated pedestrian crossing phase
 - Emergency vehicle preemption for all approaches
 - Coordinated operation with existing traffic signals at the two adjacent intersections (Main Street/South Street to the south) and Main Street/Summer Street to the north)
- Geometric improvements which would include:
 - Minor widening on Route 28 to provide minimum lane widths in both directions
 - Reconstruction of sidewalks on both sides of Route 28
 - Replacement of existing granite curb
 - Construction of new ADA/AAB compliant wheelchair ramps at all four corners of the intersection
 - Reconfiguration of the island on the eastbound Hopkins Street approach to facilitate left turns
- New pavement markings including stop lines and crosswalks for all four roadway approaches; new signage associated with the proposed improvements; and, replacement of existing signage

Initial MPO Evaluation Score: 38

Sudbury - Intersection Improvements at Route 20 and Landham Road (607249)

Location: Intersection of Route 20 (Boston Post Road) and Landham Road

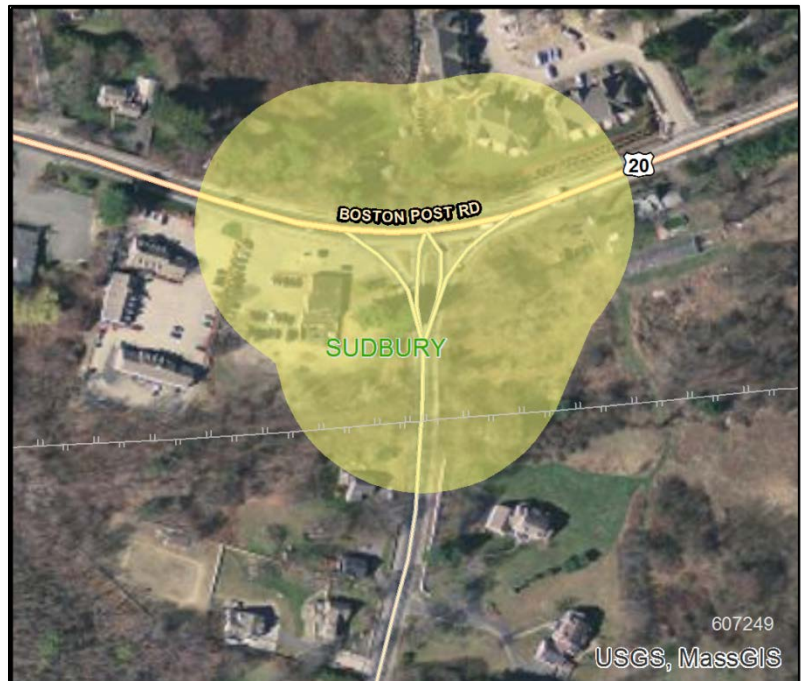
MPO Investment Category: Intersection Improvement

Main Objectives:

- Make the area safer to travel as a pedestrian or bicyclist
- Reduce congestion
- Increase safety for residents patrons of local businesses, and users of the roadway

Project Details:

- Proposed improvements will include:
 - Three lane cross-section on Route 20 will be constructed and the existing channelized right turn island will be removed
 - Easterly approach on Route 20 will include a dedicated left turn lane and through lane, westerly approach will consist of a formalized right turn lane and through lane
 - The northbound approach will consist of dedicated left and right turn lanes
 - New traffic signal at Route 20 and Landham Road
 - Sidewalk and wheelchair ramps will be installed
 - Dedicated bicycle lanes will be included along the three approaches to the intersection



Initial MPO Evaluation Score: 36

Wrentham - Construction of I-495/Route 1A Ramps (603739)

Location: Exit 15 of I-495 and the street system in the immediate vicinity of Exit 15 to Premium Outlets Boulevard (0.59 miles)

MPO Investment Category:
Intersection Improvements

Main Objectives:

- Construction of new Route 1A northbound on-ramp onto I-495 southbound
- Improve traffic operations and reduce congestion
- Improve vehicular safety
- Improve bicycle and pedestrian safety



Project Details:

- Proposed improvements to the I-495/1A intersection will include:
 - Construction of a taper-type on-ramp beginning on the eastern side of the Route 1A and entering I-495 approximately 1,500 feet east of the existing I-495 southbound on-ramp
 - Close existing I-495 SB on-ramp and loop to I-495 SB and relocate ramp to Route 1A NB
 - Removal of the existing northbound left-turn lane and the entrance ramp for Route 1A northbound left turns at the intersection at Route 1A at I-495 southbound ramps. Existing traffic signal will be modified to eliminate the northbound left-turn phase.
 - Addition of a left-turn lane to the existing off-ramp from I-495 SB to 1A NB
 - Signal retiming and coordination adjustments at the following Route 1A intersections: I-495 northbound ramps; Premium Outlet Boulevard/Mobil Driveway; and Wrentham Crossing.
 - Bicycle actuation at the intersection of Route 1A at the I-495 northbound ramps.
- Proposed bicycle and pedestrian improvements will include
 - New 5 foot bike lanes
 - New 5.5 foot sidewalks
- Proposed improvements at the Outlet shop intersection will include
 - Improved access within the Outlet shops entrance in the form of an additional travel lane on the Outlet Blvd. WB – which is a MassDOT Top 200 crash location at 1A

*FFYs 2019-2023 TIP Development:
Descriptions of All Evaluated, Unfunded Projects*

- Improved access to the Outlet shops in the form of lane reconfigurations which allow for provision of a continuous dedicated right-turn lane from I-495 SB, merging with 1A SB and extending to the Outlets entrance

Initial MPO Evaluation Score: 55