



Congestion Management Process (CMP) Committee

October 31, 2024



Notice of Nondiscrimination

You are invited to participate in our transportation planning process, regardless of your race, color, national origin (including limited English proficiency), religion, creed, gender, ancestry, ethnicity, disability, age, sex, sexual orientation, gender identity or expression, veteran's status, or background.

Read the full notice of your rights and protections at www.bostonmpo.org/mpo_non_discrimination.



Español (Spanish)

Si necesita esta información en otro idioma, por favor contacte la Boston Region MPO al 857.702.3700.

Português (Portuguese)

Caso estas informações sejam necessárias em outro idioma, por favor, contate o MPO da Região de Boston pelo telefone 857.702.3700.

Tiếng Việt (Vietnamese)

Nếu quý vị cần thông tin này bằng một ngôn ngữ khác, vui lòng liên lạc Boston Region MPO theo số 857.702.3700.

Kreyòl Ayisyen (Haitian Creole)

Si yon moun vle genyen enfòmasyon sa yo nan yon lòt lang, tanpri kontakte Espesyalis Boston Region MPO Title VI la nan nimewo 857.702.3700.

简体中文 (Simplified Chinese)

如果需要使用其它语言了解信息，请联系波士顿大都会规划组织 **(Boston Region MPO)** 《民权法案》第六章专员，电话 857.702.3700.

繁體中文 (Traditional Chinese)

如果需要使用其他語言瞭解資訊，請聯繫波士頓大都會規劃組織 **(Boston Region MPO)** 《民權法案》第六章專員，電話 857.702.3700.



Accessibility Statement

This meeting is accessible to people with disabilities. Zoom products are compliant, with exceptions, with the following standards: Web Content Accessibility Guidelines 2.1 Level AA Standards and Revised Section 508 Standards.

If you require any additional accommodations in order to participate fully in this meeting or if you have any technical difficulties, please contact **Lauren Magee**, MPO staff, at **Imagee@ctps.org**, or **857.702.3706**, or via the chat box.





Guidelines

1. All participants will join the meeting with muted microphones.
2. Please rename yourself to include your first name, last name, and affiliation.
3. After roll call, Board members may mute and unmute themselves.
Always remain muted unless actively speaking.
4. To participate in the discussion, please select the “raise hand” function.
Find this by clicking either on the “Participants” button at the bottom of the screen, and a window will pop up with a “Raise Hand” button at the bottom, or the “Reactions” button in the toolbar. The Chair will then call on participants.
5. If you are on the phone, you can use *9 to raise your hand.





Introductions

1. Introductions
2. Public Comments
3. New CMP Objectives
4. Proposed CMP Multimodal Network
5. Public Comments
6. Members' Items

Technical difficulties?

Call Lauren Magee
at 857.702.3706 or
email lmagee@ctps.org



Public Comments

1. Introductions
- 2. Public Comments**
3. New CMP Objectives
4. Proposed CMP Multimodal Network
5. Public Comments
6. Members' Items

Technical difficulties?

Call Lauren Magee
at 857.702.3706 or
email lmagee@ctps.org



CMP Work Update Discussion

Priyanka Chapekar, MPO Staff

October 31, 2024



New CMP Objectives

1. Introductions
2. Public Comments
3. **New CMP Objectives**
4. Proposed CMP Multimodal Network
5. Public Comments
6. Members' Items

Priyanka Chapekar, MPO Staff

Presentation and discussion on new CMP objectives

Technical difficulties?

Call Lauren Magee
at 857.702.3706 or
email lmagee@ctps.org



1. Introductions
2. Public Comments
3. **New CMP Objectives**
4. Proposed CMP Multimodal Network
5. Public Comments
6. Members' Items

Recap

- What is the Congestion Management Process?
- Guidelines for CMP
- Current stage of work
- Brief overview of objectives and CMP network
- **Focus points for today's meeting –**
 - Discussion and decision on CMP objectives
 - Feedback and recommendations on components of CMP network

Technical difficulties?

Call Lauren Magee
at 857.702.3706 or
email lmagee@ctps.org



1. Introductions
2. Public Comments
3. **New CMP Objectives**
4. Proposed CMP Multimodal Network
5. Public Comments
6. Members' Items

Objectives of the CMP

CMP objectives have been formulated based on Long-Range Transportation Plan (LRTP) 2050 goals:

- Equity
- Safety
- Mobility and Reliability
- Access and Connectivity
- Resiliency
- Clean Air and Healthy Communities

Technical difficulties?

Call Lauren Magee
at 857.702.3706 or
email lmagee@ctps.org



Objectives of the CMP

CMP objectives have been formulated in alignment with LRTP 2050 goals:

1. Set up strategies to quantify and evaluate congestion patterns in the Boston region - **Mobility and Reliability**
2. Improve efficient and reliable movement of people and freight across the region through multiple modes - **Access and Connectivity, Safety**
3. Evaluate multimodal transportation networks in the region to enable efficient travel demand management and identify and minimize gaps in various modes of transportation to increase utilization of multimodal facilities
- **Mobility and Reliability, Access and Connectivity**
4. Promote healthy communities by reducing traffic volumes and, consequently, air pollution arising from transportation, paying special attention to environmental justice communities
- **Clean Air and Healthy Communities, Equity**
5. Set up monitoring systems for different transportation modes to continuously evaluate congestion for improved economic vitality, racial and economic equity, public health, and climate resilience – **Equity, Resiliency**

1. Introductions
2. Public Comments
3. **New CMP Objectives**
4. Proposed CMP Multimodal Network
5. Public Comments
6. Members' Items

Technical difficulties?

Call Lauren Magee
at 857.702.3706 or
email lmagee@ctps.org

Discussion Questions

Are the current CMP objectives comprehensive in terms of clarity and scope? Is there anything that can be improved upon?



Proposed CMP Multimodal Network

Priyanka Chapekar, MPO Staff

Presentation and discussion on proposed CMP multimodal network

1. Introductions
2. Public Comments
3. New CMP Objectives
- 4. Proposed CMP Multimodal Network**
5. Public Comments
6. Members' Items

Technical difficulties?

Call Lauren Magee
at 857.702.3706 or
email lmagee@ctps.org



1. Introductions
2. Public Comments
3. New CMP Objectives
4. **Proposed CMP Multimodal Network**
5. Public Comments
6. Members' Items

CMP Network

- The CMP Network is the transportation network to be monitored for evaluating congestion and mitigation strategies.
- As the Boston region is served by multiple transportation networks, the CMP network should also be multimodal.

Characteristics of the network:

- Analyze user trends in terms of vehicle counts/ridership for typical weekday
- Threshold values for each mode determines inclusion of that route/roadway on CMP network for further monitoring and evaluation
- Performance measures for each mode will be defined according to available data and applied on routes in the network



Components of CMP Network

1. Introductions
2. Public Comments
3. New CMP Objectives
- 4. Proposed CMP Multimodal Network**
5. Public Comments
6. Members' Items

1. Roadways
2. Freight corridors
3. Bus
4. Rapid transit
5. Commuter rail
6. Ferry
7. Regional transit authorities (RTA)
8. Pedestrian network
9. Bicycle network

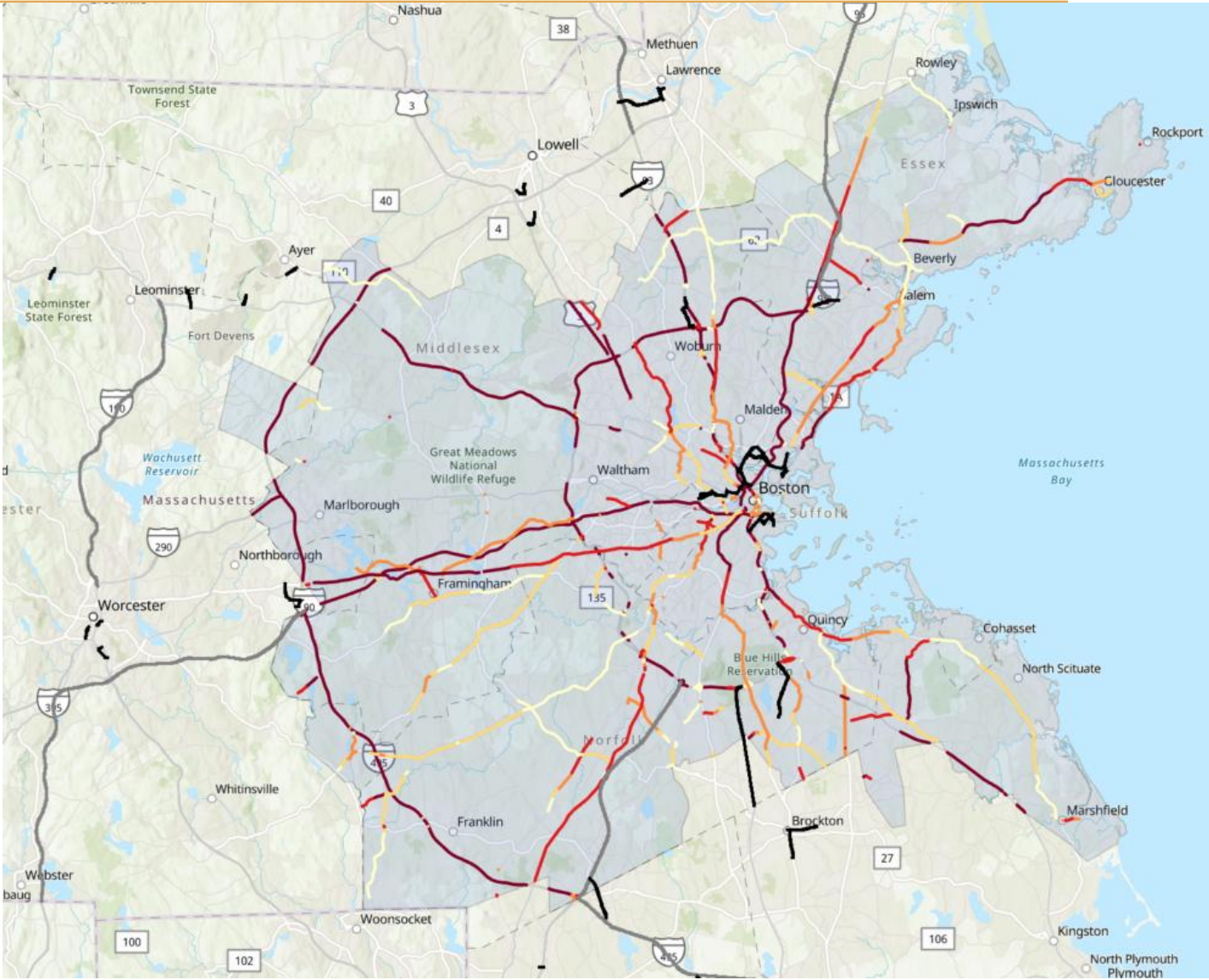
Technical difficulties?

Call Lauren Magee
at 857.702.3706 or
email lmagee@ctps.org

Components of CMP Network—Freight

1. Introductions
2. Public Comments
3. New CMP Objectives
4. **Proposed CMP Multimodal Network**
5. Public Comments
6. Members' Items

- Freeways and arterials with freight AADT > 180 (average freight AADT)
- Critical freight corridors in National Highway Freight Network (NHFN)
- Non-Primary Highway Freight System corridors in NHFN



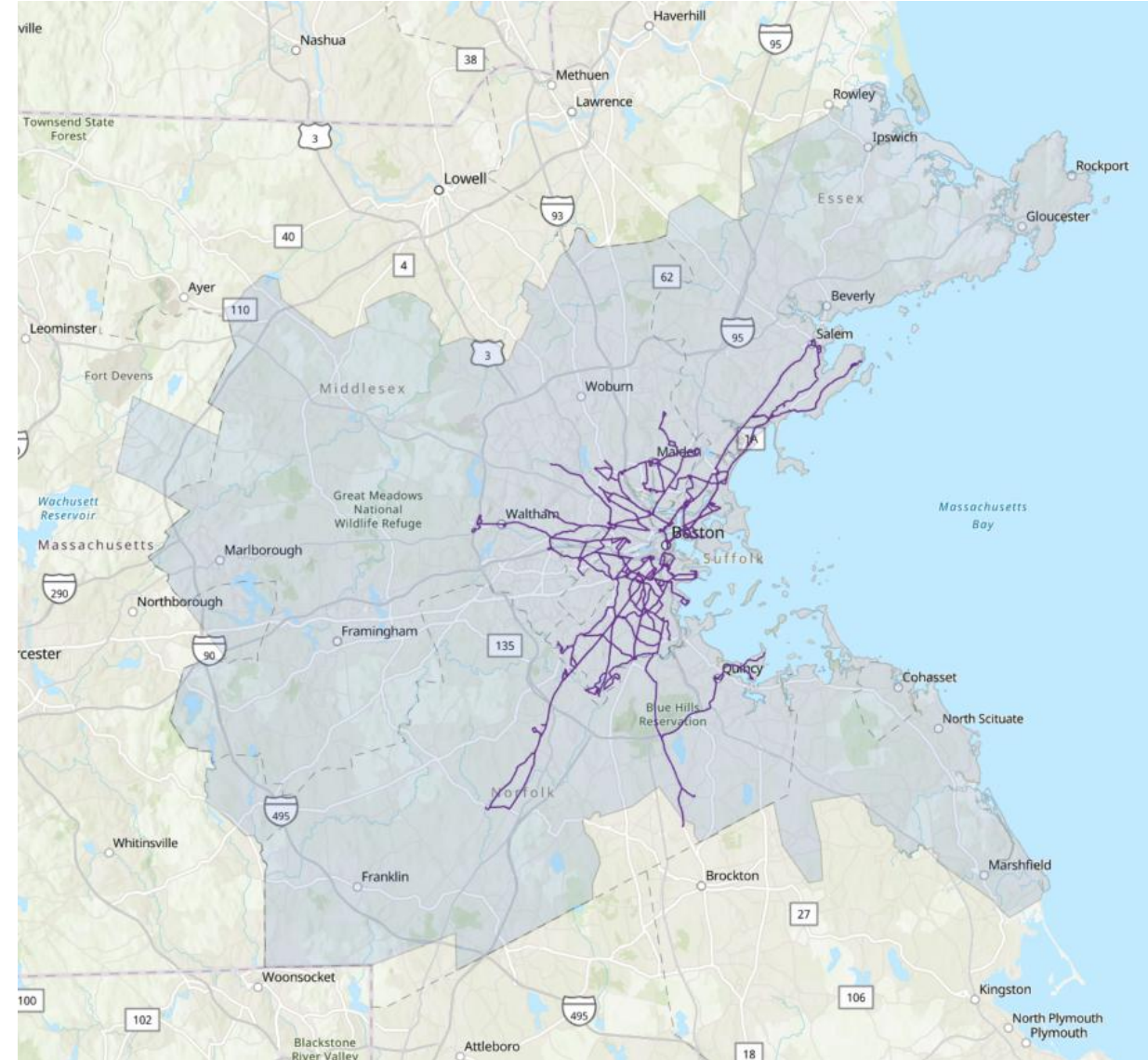
Technical difficulties?
 Call Lauren Magee
 at 857.702.3706 or
 email lmagee@ctps.org



Components of CMP Network—MBTA Bus Routes

1. Introductions
2. Public Comments
3. New CMP Objectives
4. **Proposed CMP Multimodal Network**
5. Public Comments
6. Members' Items

- MBTA ridership data
- Average weekday ridership per route calculated
- Average of all ridership calculated
- Threshold value of 1,500 riders of route (slightly lower than average) set for inclusion of route in CMP network



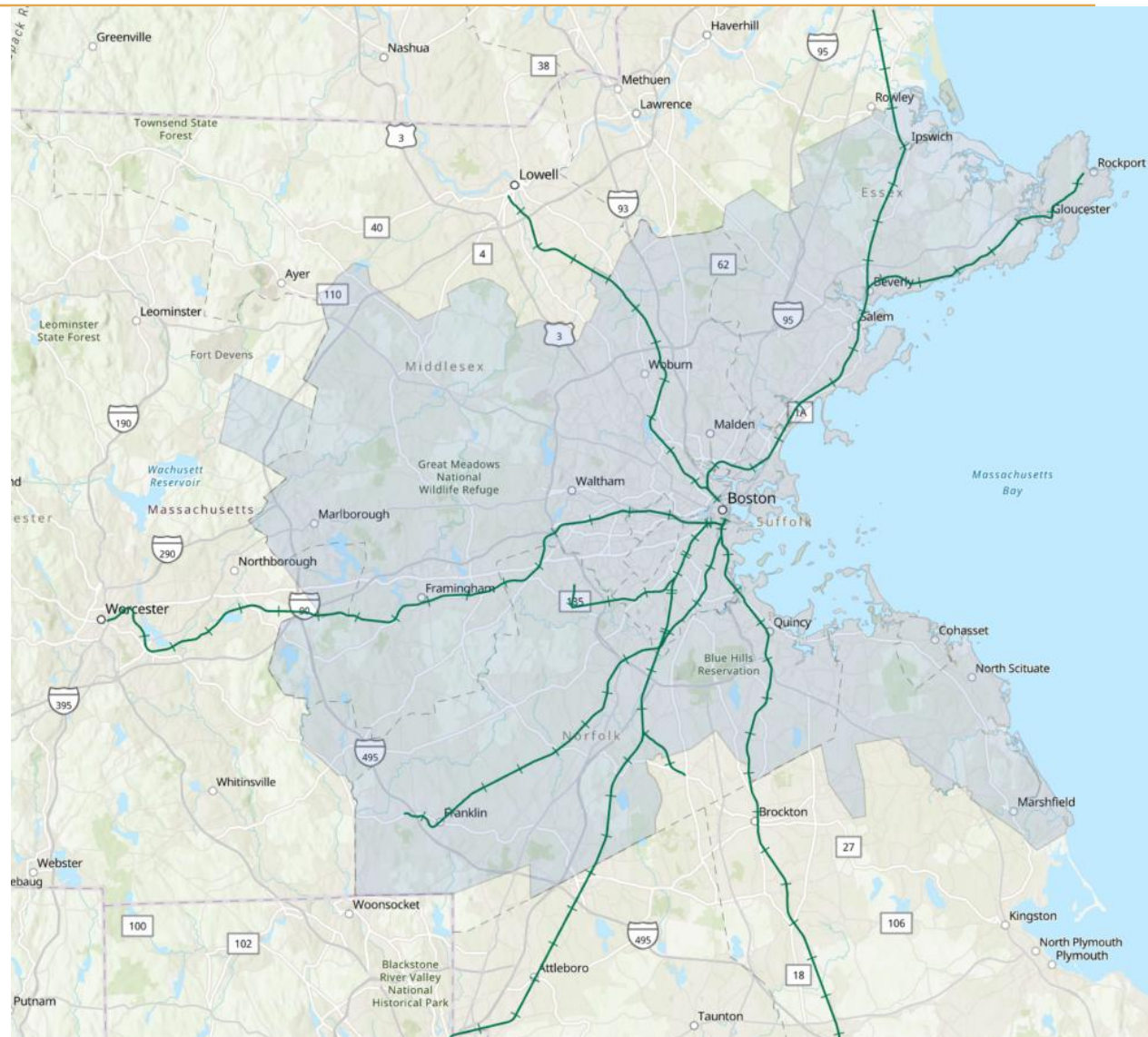
Technical difficulties?

Call Lauren Magee
at 857.702.3706 or
email lmagee@ctps.org

Components of CMP Network—MBTA Commuter Rail

1. Introductions
2. Public Comments
3. New CMP Objectives
4. Proposed CMP Multimodal Network
5. Public Comments
6. Members' Items

- Only ridership would not be equitable measure to determine threshold
- To equalize, metric calculated as ridership per mile length of route
- Values higher than average included in network



Discussion Questions

Is the threshold approach adequate to determine the network?
Are there other modes/methods to establish the network?

Discussion Question

Commuter rail currently uses ridership count per mile length as defining metric.

What can be some other metrics to determine inclusion of commuter rail routes on network?

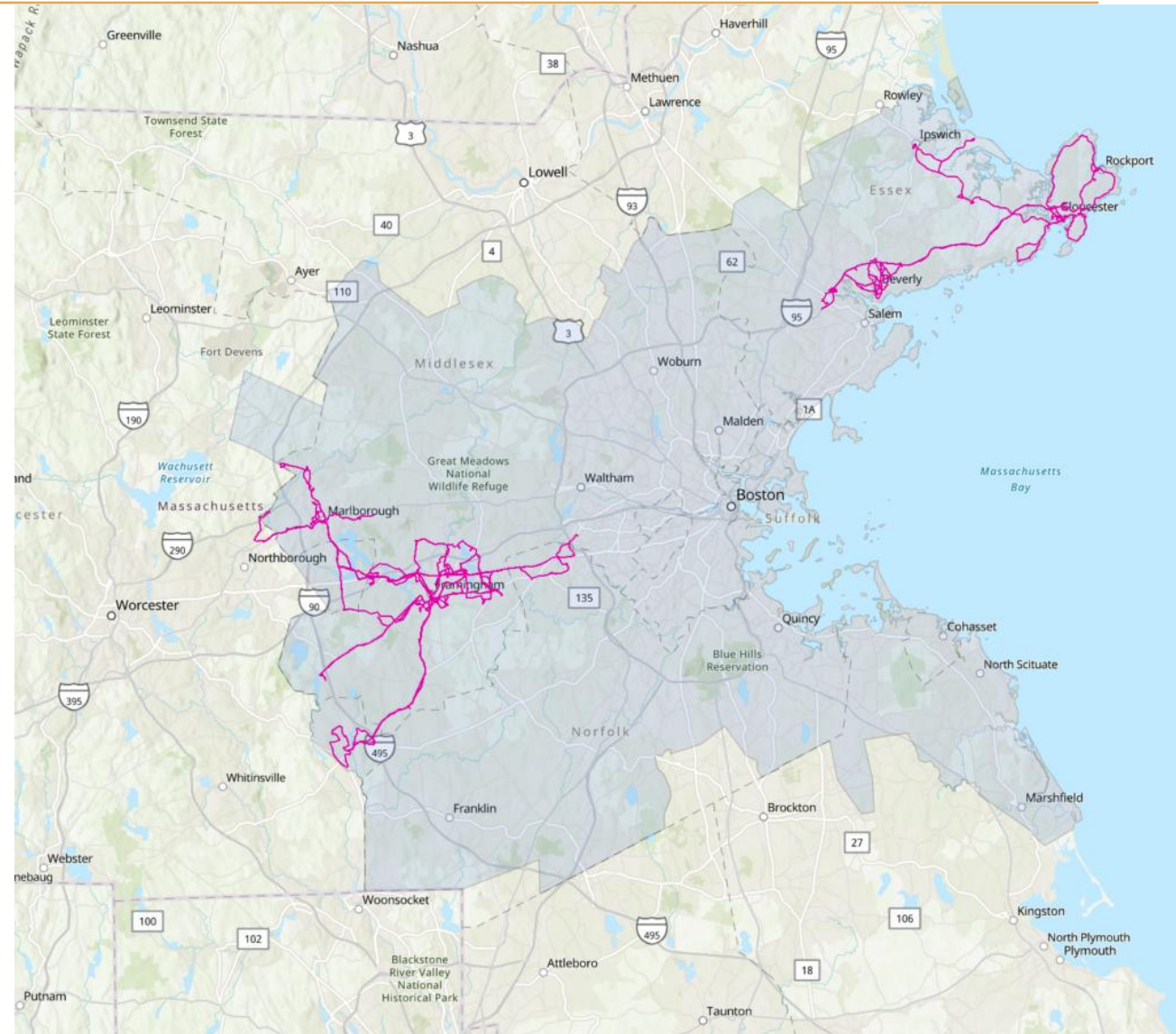


Components of CMP Network—Other RTAs

1. Introductions
2. Public Comments
3. New CMP Objectives
4. **Proposed CMP Multimodal Network**
5. Public Comments
6. Members' Items

Fixed weekday routes operated by

- Cape Ann Transportation Authority (CATA)
- MetroWest Regional Transit Authority (MWRTA)



Technical difficulties?

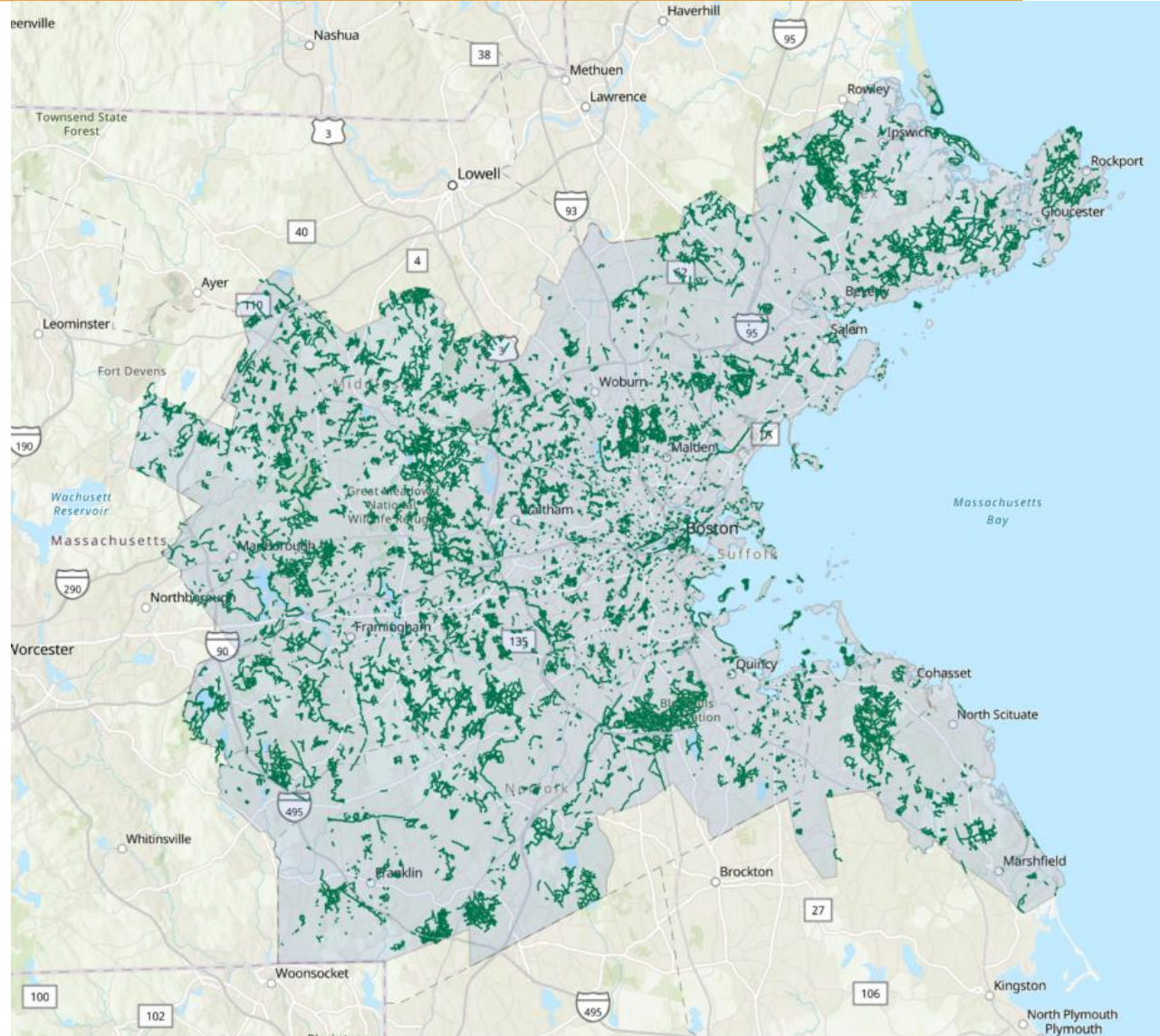
Call Lauren Magee
at 857.702.3706 or
email lmagee@ctps.org



Components of CMP Network—Pedestrian

1. Introductions
2. Public Comments
3. New CMP Objectives
4. **Proposed CMP Multimodal Network**
5. Public Comments
6. Members' Items

Includes pedestrian facilities from Walking Trails dataset published in MAPC DataCommon



Technical difficulties?

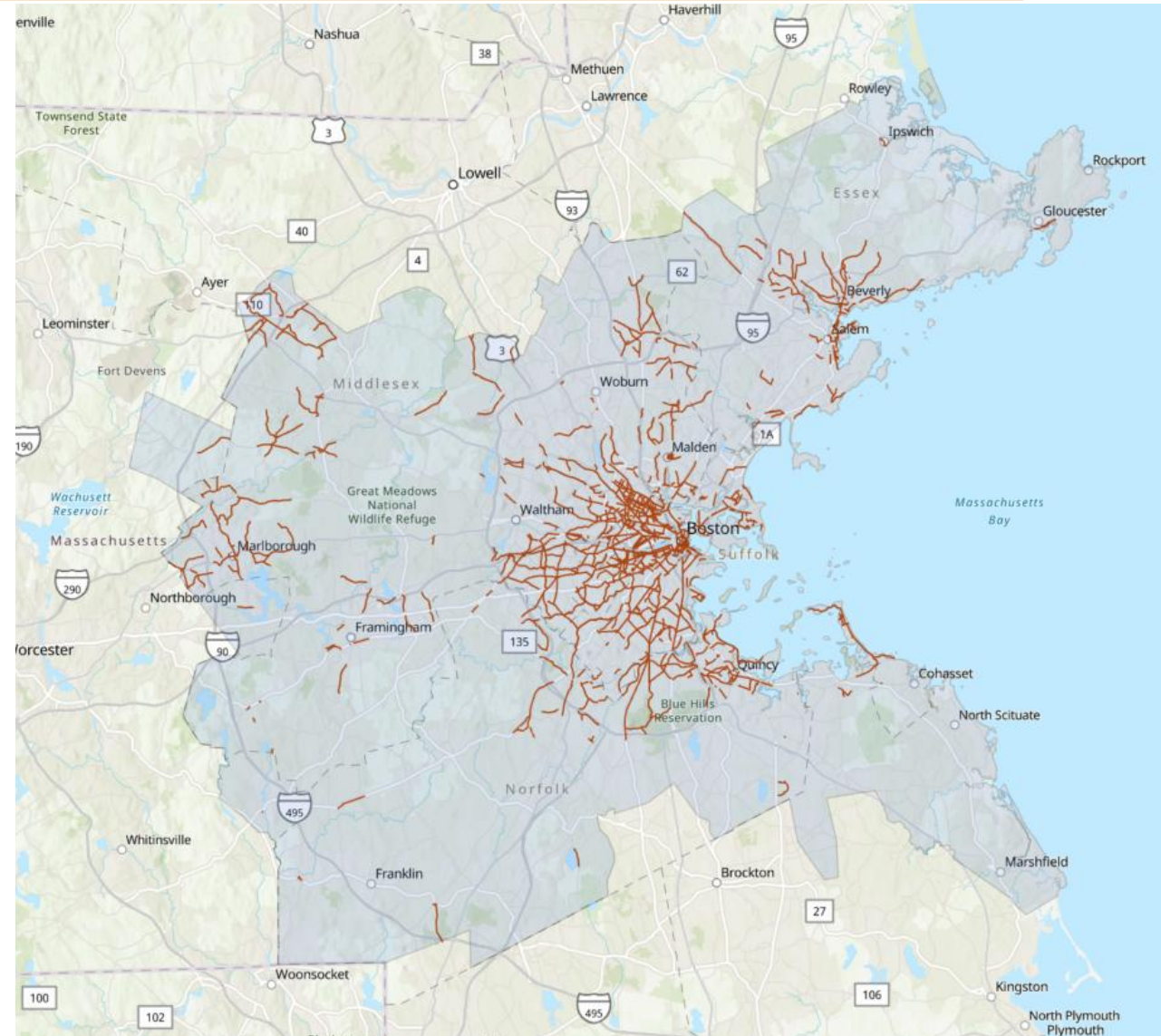
Call Lauren Magee
at 857.702.3706 or
email lmagee@ctps.org



Components of CMP Network—Bicycle

1. Introductions
2. Public Comments
3. New CMP Objectives
4. **Proposed CMP Multimodal Network**
5. Public Comments
6. Members' Items

Includes biking facilities from Bike Trails dataset published in MAPC DataCommon



Technical difficulties?

Call Lauren Magee
at 857.702.3706 or
email lmagee@ctps.org

Discussion Questions

How relevant is bike-ped data to mapping of CMP network?

Should it be focused more on usage (bike/ped counts) or availability of infrastructure (sidewalks, bike lanes, etc.) in congested areas?



Components of CMP Network

1. Introductions
2. Public Comments
3. New CMP Objectives
4. **Proposed CMP Multimodal Network**
5. Public Comments
6. Members' Items

1. Roadways
2. Freight corridors
3. Bus
4. Rapid transit
5. Commuter rail
6. Ferry*
7. Regional transit authorities (RTA)*
8. Pedestrian network*
9. Bicycle network*

*More data sources for mapping and performance measures needed for these modes

Technical difficulties?

Call Lauren Magee
at 857.702.3706 or
email lmagee@ctps.org

Next Steps

1. Identifying performance measures (PM) based on-
 - CMP network
 - Available and relevant data
 - Review of previously used PM
2. Setting up metrics to evaluate performance of CMP network

Next CMP Committee meeting to focus on performance measures—data collection and evaluation



Public Comments

1. Introductions
2. Public Comments
3. New CMP Objectives
4. Proposed CMP Multimodal Network
- 5. Public Comments**
6. Members' Items

Technical difficulties?

Call Lauren Magee
at 857.702.3706 or
email lmagee@ctps.org



1. Introductions
2. Public Comments
3. New CMP Objectives
4. Proposed CMP Multimodal Network
5. Public Comments
6. **Members' Items**

Members' Items

Reports and notices by CMP Committee members,
including regional concerns and local community issues

Technical difficulties?

Call Lauren Magee
at 857.702.3706 or
email lmagee@ctps.org

Thank you for your participation!

*If you have any other questions or comments,
please contact Priyanka Chapekar at pchapekar@ctps.org*

